

THE MOUNT SCHOOL YORK

SIXTH FORM COLLEGE



**A LEVEL
HANDBOOK
2024**

WE



**KNOW
GIRLS
CAN**

mountschoolyork.co.uk

Updated October 2023

CONTENTS

How to choose your A Levels	4	Latin	20
Careers	6	Mathematics	21
Art and Design: Fine Art	8	Further Mathematics	22
Art and Design: Textiles	9	Modern Languages: French	23
Biology	10	Modern Languages: German	23
Business	11	Music	24
Chemistry	12	Physical Education	25
Classical Civilisation	13	Physics	26
Design Technology	14	Psychology	27
Drama and Theatre Studies	15	Religious Education	28
Economics	16	Extended Project Qualification	29
English Literature and Language	17	College Games	30
Geography	18	Contact	31
History	19		

If there are any additional subjects that you wish to study in College please speak to Joanne Goudriaan.



KNOW

- Excellence in teaching of girls and understanding young women's needs.
- Small class sizes with inspiring staff who know their students well.
- Outstanding pastoral care - essential in the two short years of A Level courses.



EMPOWER

- One-to-one support with the Extended Project Qualification (EPQ).
- Extensive and bespoke UCAS and Careers support and guidance.
- Interview preparation and insight into the world of work.



ACHIEVE

- Liberal Arts programme, preparing girls for life.
- Academic Lectures from professionals in a range of disciplines.
- We set the bar high and our students attain excellent results.



HOW TO CHOOSE

YOUR A LEVELS

USEFUL CRITERIA

A good starting point would be to think about subjects you enjoy, subjects you are good at and subjects that contribute to career aspirations. If you have any ideas about careers or courses you would like to do, you should start researching them early. If you know the potential requirements for what you may want to do, this can inform your subject choices.

Things to consider, but not to worry about, include choosing 'new' subjects and the breadth of subject combination.

We can help you to do this research and make decisions, but only if you tell us what you are thinking. It is perfectly normal NOT to have any career ideas at this stage, but probably easier for you if you do!

UNIVERSITY ENTRY

Entry into Higher Education has become increasingly competitive. Detailed advice is given during your first year of Sixth Form studies. You, and your parents/guardians, will be invited to a briefing in the Spring term and throughout the year we draw on the wealth of knowledge and expertise from northern world-class universities as well as nationwide high-ranking universities.

A considerable amount of discussion and advice is initiated by your personal tutor and you will be supported throughout the Higher Education application process. Applications need to be submitted early in the Autumn term of your second year. A 'My Future Choice Profiling' for Mount Girls takes place early in College I and informs further in-depth research for your course and university choices.

Once A Levels have been taken, staff will be on hand at school when the results are published in mid-August to advise and assist you for the next stage of your career.

"The Careers Department at The Mount is particularly strong, giving us help and encouragement to ensure our application is as promising as possible. My university application was enhanced by opportunities I had to submit my writing for competitions, such as the York Literature Festival."

Hannah, Mount Alumna

COLLEGE

CURRICULUM

In College students can study three linear A Level subjects. Additionally, students can enter for the Extended Project Qualification (EPQ) which is proving a success with university applications. To supplement the numerous extra-curricular activities, Mount students are encouraged to participate in Charity initiatives, Model United Nations Conferences, Duke of Edinburgh (Gold level), volunteering and work experience/ job shadowing.

EPQ

EXTENDED PROJECT QUALIFICATION

The EPQ is a Level 3 course which is taken alongside A Levels. Through the EPQ girls are able to extend their abilities beyond A Level and prepare for university or a future career. Pupils are required to complete a project on a topic of their choice. The project can be in the form of an essay or report or an artefact e.g. a musical composition or piece of artwork.

Girls are motivated to explore their passion and personal interests in more depth. They learn to work independently and refine presentation skills.

An EPQ enhances university applications and can give girls a deeper understanding of their chosen career path, demonstrating a breadth of interest and knowledge.

Find out more about the EPQ on page 29.





CAREERS

INFORMATION, EDUCATION & GUIDANCE

At The Mount School, careers information, education and guidance is designed to provide all Mount girls with a planned course of activities to assist you in the making of confident choices and transitions which will affect your future education, career plans, employment and life as a member of adult society.

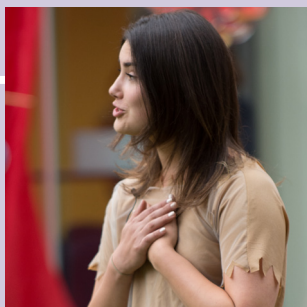
Self-knowledge and self-motivation are encouraged throughout the school curriculum and the Careers Department plays a large part in this.

We will help you to:

- Develop knowledge and understanding of yourself as an individual: your ability to relate to others, your intellectual strengths and weaknesses, your skills and personalities and your potential needs, attitudes and values
- Acquire knowledge of the world of employment and career opportunities available

- Learn how to make considered choices and decisions in relation to anticipated careers and occupations
- Be able to effectively make the transition from school to Further/Higher Education and eventually to adult and working life.
- Work in partnership with external agencies such as *Morrisby* and *Moving Forward*.

During your first year in College your tutor will encourage you to research career options making use of the well-stocked Careers Library which has an exhaustive range of up-to-date resources. The Mount encourages links with industry and we encourage all girls to organise work-shadowing or work experience placements during holiday periods.

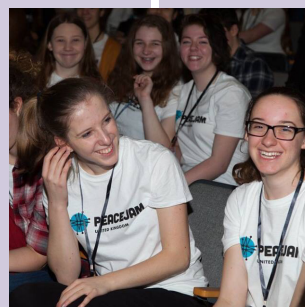


“I have experienced an outstanding academic environment and I have developed a love for my subjects. This is due to the small class sizes; it means every individual receives quality academic support. The all-girl environment has given me more confidence in lessons to ask questions without embarrassment, and to have big aspirations compared to my previous experience in a co-ed school.”

Mary, Mount Alumna

“The success of every girl is a result of the teacher’s dedication and passion for their subject and the ethos of The Mount, for every girl to succeed to the best of her ability. One of the many benefits of The Mount over larger Sixth Forms is that all the time, but particularly during the UCAS process, there is more individual help and support. Careers lessons, UCAS workshops, lectures, and individual personal tutors provide the very best personal help and guidance to make everyone’s application the strongest possible.”

Tori, Mount Alumna



ART AND DESIGN: FINE ART

(BOARD: EDEXCEL)

WHY STUDY THIS COURSE?

A Level Art and Design encourages a creative and enquiring mind. It gives you the chance to develop your artistic potential and embrace a wide range of ideas and knowledge through the form of your own personal artwork. In particular, you will develop intellectual and imaginative thought, analytical skills and aesthetic understanding. It is an exciting, creative and rewarding subject.

WHAT WILL I STUDY?

You will be able to explore a range of 2D and 3D media according to your strengths and interests. These can include drawing, painting, printmaking, life drawing, sculpture and photography. You can also explore alternative media: such as installation, mixed media, and site-specific work.

Themes for Units have included “Urban Environment-York”, “Reflections”, “Costume” and “Surfaces”. You will have the opportunity to visit local and national exhibitions, sculpture parks. You will also have the opportunity to visit art galleries abroad. Visits to Paris and Berlin have been organised in the past. London Art galleries are visited annually as well as the Hepworth Gallery, Wakefield and the Yorkshire Sculpture Park. Students are encouraged to enter competitions, for example past students have taken part in the Sky Landscape Artist of the Year competition. Artists are often invited in as well as past students to talk about their work, run activities and discuss careers in Art and Design.

WHAT DO I HAVE TO DO TO JOIN?

It is desirable that you will have a GCSE in Art or equivalent qualifications or experience.

EXTRA-CURRICULAR ART ACTIVITIES

Life Drawing sessions are held for College students and optional Creative Studies are open to all those who wish to join. These have included courses in jewellery making, creative textiles, photography and ceramics. College students have their own studio spaces and are encouraged to work in them in their own time.

WHERE COULD IT LEAD?

Students regularly go on to study Art on Foundation, Degree and MA courses at some of the best colleges in the country including Central St. Martins, Leeds College of Art, Edinburgh and York. Career prospects are excellent and include: computer aided design, product design, architecture, textiles and fashion, interior design, graphics, education,

art therapy, photo-journalism, TV and video, conservation and restoration. It is worth remembering that the creative industries are among the fastest growing economic sectors in the UK.

HOW WILL I BE ASSESSED?

The A Level comprises of two components:

Component 1: Personal Investigation (60%)	
Part 1 – Practical Work	From personal starting points students submit: <ul style="list-style-type: none">• Supporting studies• Practical outcome(s)
Part 2 - Personal Study	Students submit a piece of continuous prose of a minimum of 1,000 words. It comprises of 12% of the final qualification and is marked out of 18
Component 2: Externally Set Assignment (40%)	
<ul style="list-style-type: none">• Externally set, broad-based theme released to teachers and students on 1 February• Sustained focus of 15 hours’ controlled assessment in which students create final response(s) to the theme	
Students submit: <ul style="list-style-type: none">• Preparatory studies• Practical outcome(s)	

Rachel Milton, Head of Art and Design

ART AND DESIGN: TEXTILES

(BOARD: EDEXCEL)

WHAT IS THE COURSE ABOUT?

This is an art and design-based A level that specialises in Textiles techniques including: hand-made and machine stitch, layering, pattern design, fashion design, mixed-media, installation and garment design. In addition to this, students learn to use many different 2D visual skills and present their work in a sketchbook. This course is a two-year linear A level. Grading is through internal assessment and external moderation.

WHAT TOPICS WILL BE STUDIED?

The course comprises 60% coursework and 40% externally set task. The first year involves short projects and workshops exploring key themes, ideas and techniques in within textiles and fashion. This is followed by the first phase of their personal investigation. In the second year there are two assessed components: 'Personal Investigation' in which students specialise in their chosen area of Textiles and write a supporting essay and 'Externally Set Task' where students will choose from a range of given themes and create a project, this includes a timed practical examination.

WHAT DO I NEED TO STUDY THIS SUBJECT?

A general enthusiasm for the visual arts and a commitment to making practical artwork through lessons and independent practice. Students who have not studied art and design at GCSE can present a small portfolio of their work at interview/enrolment which will be taken into consideration.

WHAT CAN I DO TO PREPARE FOR THIS SUBJECT?

Visit both large and small museums and galleries. Look at fashion magazines. For example Vogue, ID Magazine or Dazed and Confused. Keep a diary or sketchbook of your favourite work by designers and artists. Keep a book of your own drawings from direct observation and current trends in fashion and textiles.

WHERE CAN THIS LEAD ME?

Students often progress onto a Foundation Diploma course in Art and Design or directly onto a degree in a range of art-based or other subjects. Careers in Textiles include: Textile Designer, Fashion Designer, Fashion Illustrator, Advertising, Creative direction, Stage or Theatre Designer, Film.

WHAT ENRICHMENT OPPORTUNITIES ARE THERE?

There are many visits to galleries, museums, degree shows and workshops. You will also have the opportunity to enter competitions on a local and national level.

WHAT ARE THE ENRICHMENT OPPORTUNITIES AS PART OF THIS SUBJECT?

There are many visits to galleries, museums, degree shows and workshops. You will also have the opportunity to enter competitions on a local and national level.

Rachel Milton, Head of Art and Design

BIOLOGY (BOARD: AQA)

WHY STUDY THIS COURSE?

How do cells communicate? How do our kidneys work? Do we really share 98% of our DNA with chimpanzees? Why does conserving biodiversity matter? These are some of the questions we consider.

Biology is the study of life. It is a fascinating and rapidly developing Science. The course has been found to be enhancing and interesting by students taking either other Science subjects or Arts subjects, and both groups have achieved impressive results. As part of the course we go on a residential field trip to study Ecology.

WHAT WILL I STUDY?

The course enables students to gain a deeper understanding of the structure and physiology of living organisms and their relationships with their environment. Many topics covered are currently in the media as they are vital for human health and well-being e.g. the elucidation of the human genome, GM technology and eliminating malaria.

Section 1	Biological Molecules
Section 2	Cells
Section 3	Organisms exchanging substances with the environment
Section 4	Genetic variation and relationships between organisms
Section 5	Energy Transfer
Section 6	Organism responses to the environment
Section 7	Genetics, populations, evolution and eco systems
Section 8	Gene expression
Section 9	Practical and mathematical skills

WHAT DO I HAVE TO DO TO JOIN?

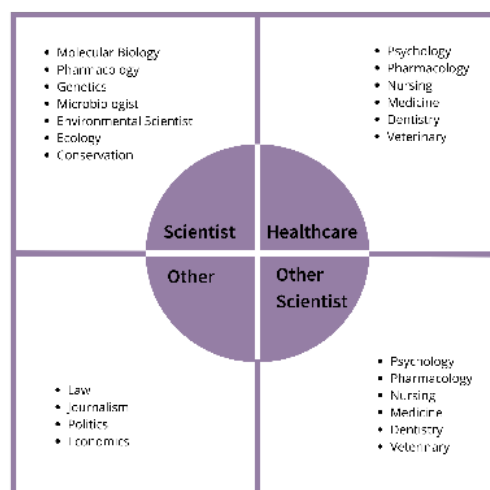
To study Biology at this level you need a sound understanding of all the Sciences at GCSE and an ability to cope with the technical language of Science. You ideally need at least a grade 6 or equivalent at GCSE (either Double Award or separate science.) An enthusiasm to explore new topics, the ability to think creatively in order to make deductions and a fascination with the living world will be advantageous.

WHERE COULD IT LEAD?

Biology provides an important basis for further studies in many fields including medicine, dentistry, veterinary

science, nursing, physiotherapy, psychology, pharmacology, molecular biology, microbiology, genetics, biochemistry, food science, agriculture, biotechnology, ecology, environmental science, conservation and sports science.

A wide variety of possible careers are then open including those in the health and caring professions, industry, research, the environment, journalism, law and economics.



HOW WILL I BE ASSESSED?

The A Level will be examined at the end of the course. There will be four components to the assessment:

Paper	Marks	Duration
Paper 1	91	2 hours
Paper 2	91	2 hours
Paper 3	78	2 hours
Non-exam assessment	Pass / fail results reported separately	Non-exam assessment by teachers during the course

Harriet Bywater, Teacher of Biology

BUSINESS (BOARD: AQA)

WHY STUDY THIS COURSE?

The course promises to engage students in their study and is relevant to today's business environment and society.

The course looks at real life case studies to help deliver the theory and includes looking at how digital technology affects business, the ethics of managerial decisions, and the globalisation of business. Students will also develop data analysis and critical thinking skills, which are needed to make informed decisions both in Higher Education and in the world of work.

A Level Business will encourage students to understand the decisions made by businesses by looking at the competitive environment which they exist in, whilst considering the wishes of stakeholders and other external factors.

Skills in researching a topic and then filtering the relevant information before making a business presentation will be developed.

WHAT WILL I STUDY AND HOW WILL I BE ASSESSED?

You will study the following topics:

College 1

- What is a Business?
- Managers, leadership and decision making
- Decision making to improve marketing performance
- Decision making to improve operational performance
- Decision making to improve financial performance
- Decision making to improve human resource performance

College 2

- Analysing the strategic position of a business
- Choosing strategic direction
- Strategic methods: how to pursue strategies
- Managing strategic change

Paper one: 2 hour exam

Includes multiple choice, short answer questions and two essay questions.

Paper two: 2 hour exam

Comprising of three data response questions.

Paper three: 2 hour exam

Includes a case study with approximately six questions.

WHAT DO I HAVE TO DO TO JOIN?

Ideally, a minimum GCSE grade 6 or above in both English and Mathematics is desirable. GCSE Business Studies is not required.

WHERE COULD IT LEAD?

This course provides a suitable foundation for the study of Business Studies or related courses at university.

It is particularly suitable for candidates intending to pursue careers in management, accountancy, banking, marketing and retail. Of course it is also an excellent grounding for those hoping to eventually run their own business too.

Because this course uses case studies about real businesses and incorporates work with the Prince's Trust, students will gain insights into the practical elements of business as well as the more theoretical course elements.

Recent students have progressed to study Business and Management at the University of Bath, Business Administration at the University of Essex and International Business at Munich Business School.

CHEMISTRY (BOARD: AQA)

WHY STUDY THIS COURSE?

Are you good at understanding new ideas and concepts? Do you like solving problems and enjoy using models to explain what we see? Do you get satisfaction out of analysing, interpreting and explaining data from experimental activities and can you complete long calculations? Have you an understanding of how to use practical equipment, a steady hand and do you like mixing chemicals to make new compounds?

If you have answered 'Yes' to some of the questions above, then Chemistry might be a subject you will enjoy at A Level.

WHAT WILL I STUDY?

- How the atomic structure of elements is linked to the Periodic Table. Elements in Group 2 have applications in medicines and agriculture. The halogens in Group 7 are very reactive non-metals and the reactions of the Period 3 elements with oxygen are considered.
- How to complete calculations using moles.
- Theories of bonding explaining how we engineer new materials with desirable properties.
- The use of chemical reactions as a source of heat energy and understanding why chemical reactions occur.
- Kinetics which enables chemists to change the speed of reactions and equilibria which indicates how far reactions will go.
- Redox reactions involving a transfer of electrons leading to the use of electrochemical cells as a portable supply of electricity.
- Acids and bases importance in domestic, environmental and industrial contexts.
- The transition metals formation of coloured compounds and their use as catalysts.
- Organic chemistry and the millions of covalent compounds of the element carbon. Many are used as drugs, medicines and plastics. Organic mechanisms enable reactions to be explained and you will learn about some of the analytical techniques used by chemists.
- Practical work will be an integral part of the whole course.

WHAT DO I HAVE TO DO TO JOIN?

To study Chemistry at this level you need a sound understanding of all the Sciences at GCSE and an ability to cope with the technical language of Science. You will ideally need at least a grade 6 (or equivalent) at GCSE (either as Double Award or separate science) and a grade 6 (or equivalent) at Maths.

WHERE COULD IT LEAD?

Chemists have an enormous number of career options from art restoration, protecting endangered species, geological prospecting, marketing, the food industry, medicine, pharmacy, veterinary science, dentistry, textiles, climate change, media, law and, of course, straight Chemistry.

HOW WILL I BE ASSESSED?

Year 2	Three written papers of 2 hours all including questions about practical techniques. The first two papers will be on set areas of the syllabus and the third paper on any topic across the whole syllabus and will include a multiple choice section.
--------	--

Abigail Gingele, Head of Chemistry

CLASSICAL CIVILISATION

(BOARD: OCR)

WHY STUDY THIS COURSE?

Much of our modern world derives from Classical Greece and Rome. This course gives an insight into the principal achievements of the Greeks and Romans and their enduring legacy.

In Classical Civilisation students are enabled to develop their powers of literary appreciation, to understand the methods of historical investigation and to hone their skills of researching and presenting evidence in an effective way.

The study of Greek and Roman innovations in political matters are of especial relevance in light of recent developments in Western politics.

WHAT WILL I STUDY?

Classical Civilisation is multi-disciplinary in nature. It involves the study of literature, history and social issues. During the course of the two years, students will read some of the great cornerstones of European literature – the first epic poems, historical and political investigations dealing with the development of Athenian democracy and the emergence of the first Roman emperor, which will complement the reading of Virgil's Aeneid.

WHAT DO I HAVE TO DO TO JOIN?

To study A Level Classical Civilisation the most important requirement is an interest in and enthusiasm for finding out about the ancient world and its influence on the modern world.

There is no need to have had any experience of the Latin or Ancient Greek languages as all material is read in translation.

A grade 6 or above in Classical Civilisation, English Literature or History is desirable.

WHERE COULD IT LEAD?

The multi-disciplinary nature of this subject means that it combines well with a variety of other subjects and can lead on to further study in a range of subject fields and/or careers in related areas such as archaeology, museum work and teaching.

Past students of this subject have also been welcomed into careers such as business management, advertising, computer programming or the Civil Service.

HOW WILL I BE ASSESSED?

Topics	Assessment Methods
The World of the Hero: Homer's Odyssey and Virgil's Aeneid.	2 hour 20 minutes written exam.
Culture and the Arts: Imperial Image	1 hour 45 minutes written exam.
Beliefs and Ideas: Democracy and the Athenians	1 hour 45 minutes written exam.

Matthew Adams, Head of Classics

DESIGN TECHNOLOGY

(BOARD: EDEXCEL)

3D DESIGN

WHAT IS THE COURSE ABOUT?

This is a design-based A level that specialises in three-dimensional design and media including model-making, architecture, products, and other three-dimensional art techniques including the use of a workshop. In addition to this, students learn to use many different drawing skills and present their work in a sketchbook. This course is a two-year linear A level. Grading is through internal assessment and external moderation.

WHAT UNITS/TOPICS WILL BE STUDIED?

The course comprises 60% coursework and 40% externally set task. The first year involves short projects and workshops exploring key movements in architecture, lighting and styles. This is followed by the first phase of the personal investigation. In the second year there are two assessed components: 'Personal Investigation' in which students specialise in their chosen area of 3D Design and write a supporting essay and 'Externally Set Task' where students will choose from a range of given themes and create a project, this includes a timed practical examination.

WHAT DO I NEED TO STUDY THIS SUBJECT?

GCSE English: 4 GCSE Art or Design Technology: 5

A general enthusiasm for the visual arts and a commitment to making practical artwork through lessons and independent practice. Students who have not studied art and design at GCSE can present a small portfolio of their work at interview/enrolment which will be taken into consideration.

WHAT CAN I DO TO PREPARE MYSELF TO STUDY THIS SUBJECT?

Visit museums and galleries in central London as well as some of the iconic architecture in the city. Identify your favourite architect or designers. Recommended reading: 50 Architects You Should Know by Isabel Kuhl, Kristina Lewis, Sabine Thiel-Siling and 50 Designers You Should Know by Claudia Hellman, Nina Kozel, Hajo Duchting

WHERE CAN THIS LEAD ME?

Students often progress onto a Foundation Diploma course in Art and Design or directly onto a degree in a range of art-based or other subjects. Careers in 3D Design include: Architect, Surveyor, Architectural technician, Product Designer, Furniture Design, Jewellery Design, Advertising, Creative direction, Stage or Theatre Designer, Film.

Rachel Milton, Head of Art and Design

DRAMA AND THEATRE STUDIES

(BOARD: EQUQAS)

WHY STUDY THIS COURSE?

Drama and Theatre combines theoretical and practical work and involves studying the history of theatre, set texts, key theatre practitioners, reviewing live performance and developing practical skills. You will pursue individual interests such as acting, set or costume design and develop communication and teamwork skills.

WHAT WILL I STUDY?

At A Level you will gain a knowledge and understanding of theatre practice through your own engagement with the medium as both participant and informed audience member.

You will develop performance and/or production skills. You will work in a group to develop and present a performance based on an extract from a published play and a devised performance. You will also study the work of an influential practitioner or theatre company and link this study to your practical work and you will submit a portfolio detailing your research and preparatory work.

You will also increase your ability to think independently, make judgements and refine your work in the light of research. You will demonstrate the ability to analyse the ways in which different performance and production elements are brought together to create theatre.

WHAT DO I HAVE TO DO TO JOIN?

There are no fixed course requirements; you do not need to have studied GCSE Drama. The varied nature of the course means that it is suitable for students with an interest in English and drama but also students who enjoy art or design-based subjects.

WHERE COULD IT LEAD?

Drama and Theatre encourages you to present yourself in a confident, articulate manner; essential skills in any career. Teamwork and individual initiative are key areas developed by the course.

This qualification could lead to a career in the theatre, such as performance, stage management, arts administration etc. However, it can also lead to a much broader range of careers. Past students, for example, have gone on to study a range of disciplines at university and pursue diverse careers in areas including law, journalism, media research, business administration and teaching.

HOW WILL I BE ASSESSED?

Assessment Method

Theatre Workshop 20%

You will be assessed on either acting for design. You will participate in the creation, development and performance of a piece of theatre based on a reinterpretation of an extract. You will produce a creative log based on the rehearsal process.

Text in Action 40%

You will be assessed on either acting or design. You will participate in the creation, development and performance of two pieces of theatre;

A devised piece using the techniques of an influential theatre practitioner or company

An extract from a text in a different style

You will also produce a written process and evaluation report.

Text in Performance 40%

This unit is a written exam. You will answer questions based on your chosen set texts. You will also discuss and reflect upon like live productions seen during the year. This is an externally assessed examination.

Kim Buckley, Drama Teacher

ECONOMICS

(BOARD: EDEXCEL)

WHY STUDY THIS COURSE?

Economics is a social science concerned with the production, distribution, and consumption of goods and services. Economics can generally be broken down into macroeconomics, which concentrates on the behaviour of the economy, and microeconomics, which focuses on individual people and businesses.

Why is Economics useful?

Economics affects our daily lives in both obvious and subtle ways. From an individual perspective, economics frames many choices we must make about work, leisure, consumption and how much to save. Our lives are also influenced by macro-economic trends, such as inflation, interest rates and economic growth.

What can Economics teach you?

Economics teaches how to make well-informed decisions. A large part of the subject is decision making, what should the government do to cut the budget deficit; what should a business do to raise profit margins. It teaches us how to go about making choices, which is vitally important in business.

WHAT WILL I STUDY?

Economics helps you to think strategically and make decisions to optimise the outcome. The course promises to thoroughly engage students and is relevant to today's economic environment.

The aims and objectives of the Pearson Edexcel Level 3 Advanced GCE in Economics A are to enable students to:

- develop an interest in, and enthusiasm for, the subject
- appreciate the contribution of economics to the understanding of the wider economic and social environment
- develop an understanding of a range of concepts and an ability to use those concepts in a variety of different contexts
- use an enquiring, critical and thoughtful approach to the study of economics and develop an ability to think as an economist
- understand that economic behaviour can be studied from a range of perspectives

- develop analytical and quantitative skills, together with qualities and attitudes that will equip them for the challenges, opportunities and responsibilities of adult and working life.

WHAT DO I HAVE TO DO TO JOIN?

Ideally, a minimum GCSE grade 6 or above in both English and Mathematics is desirable.

WHERE COULD IT LEAD?

People who have studied Economics and Finance are particularly well-prepared for jobs in banking and the financial sector, such as in accountancy firms.

Economics also combines well with Politics, Law and Psychology.

ENGLISH LITERATURE AND LANGUAGE (BOARD: OCR)

WHY STUDY THIS COURSE?

The course offers clear continuity from GCSE English and GCSE English Literature and involves the study of literary and non-fiction written and spoken texts. It provides a coherent approach to integrating language and literature, drawing on the discipline of stylistics and other literary and linguistic practices.

The course offers depth and breadth of study, enabling students to explore the richness of language and literature and cultivate their own critical responses. The course also enables students to develop creativity and expertise by producing their own original writing. Students explore texts of greater variety and challenge than those encountered at GCSE and learn to apply linguistic and literary concepts and methods to their analysis of literature.

WHAT WILL I STUDY?

The course includes the study of a wide range of literary texts across the genres of prose, drama and poetry, ranging from Shakespeare to 21st century writers such as Ian McEwan and Seamus Heaney, in addition to non-fiction genres such as transcripts, satire and memoirs. There is also an unseen element that encourages wide reading and textual analysis, thus developing independent learning and the ability to apply literary and linguistic knowledge effectively.

Current set texts: Shakespeare: Othello; William Blake: Songs of Innocence and Experience; F.Scott Fitzgerald: The Great Gatsby.

WHAT DO I HAVE TO DO TO JOIN?

You need to be a keen reader and interested in exploring the way language is used as well as being willing to contribute ideas to discussion. You should have at least a grade 6 (or equivalent) in English Language and Literature at GCSE. We expect you to do some preliminary reading in the summer holidays prior to starting the course.

WHERE COULD THIS COURSE LEAD?

Whether or not you go on to study English to degree level, this A Level will ensure you are well prepared to apply for a variety of courses at university. Most English Literature courses at university also require students to study language components and this course offers a strong foundation should you wish to apply for English, a related, or indeed, any other discipline at university. An A Level in English is directly

useful for careers such as management, teaching, law, journalism and the media. It is also valuable and appropriate for a wide range of professional occupations.

HOW WILL I BE ASSESSED?

Paper 1. Exploring non-fiction and spoken texts.

Component 01 focuses on an anthology of 20 non-fiction spoken and written texts across different time periods and contexts. Comparative and contextual study based on the anthology and unseen texts.

Closed text 32 marks. Written paper. 1 hour 16% of total A Level.

Paper 2. The language of poetry and plays.

Component 02 focuses on one poetry collection and one drama text. Exploration of the texts through stylistic and dramatic analysis.

Closed text 64 marks. Written paper. 2 hours 32% of total A Level.

Paper 3. Reading as a writer, writing as a reader.

This component focuses on exploring the nature of narrative in one prose fiction text. Writing as a reader develops the understanding of narrative technique through a creative writing task (500 words) and a commentary (250 words).

Open text 64 marks. Written paper: 2 hours 32% of total A Level.

Non-examined unit 4. Independent study: analysing and producing texts.

Independent study allowing students to pursue particular interests and develop their expertise through an analytical comparative essay on a set text from a list of 12 non-fiction texts and a second free choice text [literary or non-literary].

One text must be post-2000. You will also produce a piece of original non-fiction writing.

Non-examined assessment: 40 marks 20% of total A Level.

Adam Dawson, Head of English

GEOGRAPHY (BOARD: AQA)

WHY STUDY THIS COURSE?

Our world will change more in the next 50 years than it has ever done before. Geography explains why and helps students prepare for those changes. Geography bridges the gap between the science subjects and arts subjects. It builds a knowledge and understanding of current events from local to global and provides opportunities through fieldwork, for first hand investigation of places, environments and human behaviour. It also develops skills for the future including literacy, numeracy, ICT, problem solving, team work, thinking skills and enquiry.

WHAT WILL I STUDY?

The specification is designed to excite minds, challenge perceptions and stimulate investigative and analytic skills. The Physical Geography topics include the study of the water and carbon cycles; glacial systems and hazards. The Human Geography topics include the study of global systems and global governance; changing places and contemporary urban environments. Students will also carry out an individual fieldwork investigation.

FIELDWORK

Practical work in the 'field' is an essential element of all Geography teaching. The course will include a residential field trip. Previous trips have included visits to Snowdonia, Lake District and North York Moors.

EXTRA-CURRICULAR

As a department we maintain close, productive links with the local branch of the Geographical Association and attend lectures on a variety of subjects such as hazard management, flooding and international security.

WHAT DO I HAVE TO DO TO JOIN?

It is useful, but not essential, to have studied Geography at GCSE. A genuine interest in the study of physical and human forces of change affecting the earth is required.

WHERE COULD IT LEAD?

Graduates in the subject have a high success rate in finding employment, a fact which is generally attributed to the 'relevance' of the subject in an ever-changing, environmentally conscious world and the broad range of skills and knowledge which it encompasses.

It is not surprising that such a wide range of careers are open to geographers including: financial services, conservation, planning, environmental consultancy, marketing and retailing, management, the media, teaching and the Civil Service. In recent years a number of students have continued with Geography at University.

HOW WILL I BE ASSESSED?

Component	What is Assessed?	Assessment Method
Physical Geography	Section A: Water and carbon cycles Section B: Glacial Systems and landscapes Section C: Hazards	Written exam: 2 hours 30 minutes 40% of A level Question types: short answer, levels of response and extended prose
Human Geography	Section A: Global systems and global governance Section B: Changing places Section C: Contemporary urban environments	Written exam: 2 hours 30 minutes 40% of A level Question types: short answer, levels of response and extended prose
Geographical Investigation	Students complete an individual investigation which must include data collected in the field	3,000-4,000 words 20% of A Level Marked by teachers Moderated by AQA

Carol Cook, Head of Humanities

HISTORY (BOARD: AQA)

WHY STUDY THIS COURSE?

'A society out of touch with its past cannot have confidence in its future. History helps us to know where we come from and to explain the world as it is.'

This statement helps to explain why so many leading figures in fields such as politics, the civil service, business, the legal profession, publishing, social work, teaching, entertainment and journalism have studied History at A Level and beyond. It is the ability of historians to reason, explain, understand significance, evaluate evidence and to communicate effectively that takes them to the top. Historians learn to understand who has power in society, how it can be used and challenged, and that prepares them to make a difference.

You'll be joining a lively history community where we take all the local, national and international opportunities we can to indulge our passion for the subject.

WHAT WILL I STUDY?

At The Mount School, we study a varied A Level course provided by AQA, helping you to explore important concepts that will help you to understand the modern world. Our study of Britain 1851-1964 examines the political, social and economic history of the nation. Our study of the Cold War 1945-1991 is perhaps the most relevant of all A Level units given recent global developments. We will study the division of Europe into two competing ideologies and examine the impact of Superpower politics on Asia, Africa and Central America. This unit of study is a must for anyone wanting to understand the complexities of contemporary international relations. For your personal study you get to work on a topic that interests you, to have one to one tutorials to improve your work and to learn how to produce a mini university-style dissertation.

WHAT DO I HAVE TO DO TO JOIN?

To be successful you must be genuinely interested in History and be prepared to work hard. Reading widely for pleasure and interest is essential. It is reading beyond textbooks that makes the subject most interesting and leads to high grades.

It is possible to study A Level History without GCSE History, although some background reading is required, along with learning some historical skills at the start of the course. You will soon get hooked!

WHERE COULD IT LEAD?

Past A Level historians have gone on to study a wide variety of degrees including History, Philosophy, Anthropology, Archaeology, Modern Languages, English, Medicine, Psychology, Law, Politics, International Relations and Art.

Check out many leading universities and you will find they now require academic subjects such as History for many degree courses. Success at History A-Level impresses people. Of course, many of us study History just because we just love it!

HOW WILL I BE ASSESSED?

Unit	What is Assessed?	Assessment Method
1	Britain 1851-1964	A study in breadth examined in 2.5 hours at the end of the second Sixth Form year – 40%.
2	The Cold War 1945-1991	A study in depth examined in 2.5 hours at the end of the second Sixth Form year – 40%.
3	A personal study of the student's choice	4,500 words written in the second year – 20%.

Joanne Goudriaan, Head of History

LATIN (BOARD: OCR)

WHY STUDY THIS COURSE?

Our modern world has its roots in Roman culture. This course offers an opportunity to study a classical language and its literature and to gain an insight into the enduring legacy of the Romans.

In Latin, students will study literary texts in the original language, developing a sensitivity for literary techniques and an appreciation of the cultural context.

WHAT WILL I STUDY?

In Latin students will study original texts in prose and verse literature by some of the ancient world's greatest authors, such as Virgil and Cicero.

WHAT DO I HAVE TO DO TO JOIN?

To study Latin, a grade 7 or higher at GCSE is required.

WHERE COULD IT LEAD?

Latin combines well with other foreign languages and the Humanities. However, Mathematics and the Sciences are also very compatible with Latin, each requiring logic and close attention to detail.

Looking further ahead, students who develop an enthusiasm for the ancient world will find that Classics Departments at university offer a wide range of courses. In the world of work, Classicists can work in archaeology, museum and archive work or teaching. However, Classics graduates are valued in the workplace in general as their academic studies have led them to develop skills which are at a premium in a professional context.

HOW WILL I BE ASSESSED?

Topics	Assessment Method
Unseen Translation: Livy and Ovid	1 hour 45 minutes exam.
Prose composition or Comprehension	1 hour 15 minutes exam.
Prose literature: Cicero, Tacitus, Apuleius Two prose texts	2 hour exam.
Verse literature: Virgil, Horace and Ovid Two verse texts	2 hour exam.

Matthew Adams, Head of Classics

MATHEMATICS (BOARD: AQA)

WHY STUDY THIS COURSE?

The most important reason for choosing to study Mathematics beyond GCSE is because you enjoy it! Studying Maths is also very useful for supporting a variety of other A-Level courses including Biology, Chemistry, Physics, Geography and Psychology.

WHAT WILL I STUDY?

At A Level, you will study three distinct areas of Mathematics: Pure Maths, Mechanics and Statistics. In Pure Maths lessons you will build on the GCSE course, in particular continuing to develop algebraic skills. You will also study graphs and trigonometry to greater depth, making regular use of technology. In addition, you will be introduced to a new area of Maths, called Calculus.

In Statistics and Mechanics, you will look at the way Mathematicians use their subject in real life situations.

WHAT CAN I DO OUTSIDE THE STANDARD CURRICULUM?

College mathematicians are encouraged to act as 'Maths Mentors', working with younger girls on a regular basis. This may involve enrichment activities, language support or general consolidation of skills.

Also, each year all A Level mathematicians enter the UKMT Senior Maths Challenge.

WHERE COULD IT LEAD?

You could use your Maths to become, for example, an engineer, actuary or environmental statistician, or you could use your Maths for a career in science or medicine, economics or finance. The workplace values mathematicians extremely highly.

Visit www.mathscareers.org.uk or www.plus.maths.org for more ideas.

WHAT DO I HAVE TO DO TO JOIN?

You need to have studied the higher tier GCSE course and ideally achieved at least a Grade 7 (for Maths) or 8 (for Further Maths). You need to enjoy algebra, graphs and trigonometry. You need to like puzzling your way through problems and not mind getting stuck.

HOW WILL I BE ASSESSED?

The assessment for Maths takes the form of 3 x 2 hour examinations at the end of the course.

Graphical calculators are allowed in all examinations.

	Maths
Paper 1	Pure Mathematics
Paper 2	A mixture of Pure Mathematics and Mechanics
Paper 3	A mixture of Pure Mathematics and Statistics

Tony McAleese, Head of Mathematics

FURTHER MATHEMATICS

(BOARD: AQA)

WHAT IS FURTHER MATHS AND HOW DOES IT FIT INTO THE A LEVEL SCHEME?

Further Maths is a subject in its own right that builds on the work done in Maths. You need to study Maths A level in order to study Further Maths. Some of the content is harder, but some of it is just different. It is possible to take AS Further Maths alongside A level Maths.

WHAT TOPICS WILL I STUDY?

There is a small element of choice within the Further Mathematics course and this decision will be made with the group on a year by year basis.

You will learn to use vectors and matrices to model 3 dimensional situations and answer questions such as ‘How do you deal with the square root of a negative number?’ Mathematical proof is a key part of the Further Maths course and you will be taught how to use your algebra to produce rigorous and detailed logical arguments in a variety of ways. Students studying Further Maths will also have the opportunity to meet Discrete Maths, with applications to Business and Logistics, particularly in the areas of scheduling and efficient use of resources.

WHY CHOOSE FURTHER MATHS?

If you are going on to study Maths, or a Science based course at university, Further Maths could be very useful to you, if not a requirement for the course. For example, Imperial College London ‘prefer’ Further Maths for their engineering courses and Warwick require it for their Maths course.

WHAT DO I HAVE TO DO TO JOIN?

You need to have studied the higher tier GCSE course, ideally achieving at least a Grade 8, and also be studying A level Maths.

HOW WILL I BE ASSESSED?

The assessment for Further Maths takes the form of 3 x 2 hour papers at the end of the course.

	Further Maths
Paper 1	Pure Mathematics.
Paper 2	Pure Mathematics.
Paper 3	Two Application options, chosen from Mechanics, Statistics and Discrete Mathematics.

Tony McAleese, Head of Mathematics

MODERN LANGUAGES

FRENCH (BOARD: AQA)

GERMAN (BOARD: AQA)

WHY STUDY A MODERN LANGUAGE?

- 94% of the world's population doesn't speak English as their mother tongue and 75% don't speak it at all. UK companies are realising that they need foreign languages to compete when trading internationally.
- Languages improve the quality of your life and open doors for the future.
- Languages give you access to a whole new world: music, the Internet, culture, history and people you wouldn't otherwise meet.
- There are improved earning potential and opportunities for those using languages in work.
- The skills acquired qualify you to study any other world language at university.
- Language study gives you communication and interpersonal skills which are highly valued wherever you are and whatever you do.
- Language study enriches your global cultural knowledge.
- Learning a language at A' Level improves your comprehension and critical thinking skills.

WHAT WILL I STUDY?

We offer A Levels in French and German. The courses are exciting and versatile and enable you to study traditions, history, politics and culture alongside language. You will acquire advanced language skills via the study of society and current affairs in the target language and carry out an individual research project. The focus will be on countries and communities where the Target Language is spoken, and the course will inspire cultural curiosity. You will develop grammar skills and broaden your vocabulary. Your confidence, to interact in writing and speaking with users of the language, will grow and you will develop key transferable skills.

You will have time each week with the French / German assistant, to work on your speaking skills.

FRENCH AND GERMAN FOLLOW THE AQA SPECIFICATION

Year 1 Content	Year 2 Content
Social Issues current trends Artistic Culture. Grammar. Book or film study.	Social Issues. Political Life. Grammar. Book or film study.

WHAT DO I HAVE TO DO TO JOIN?

You need real enthusiasm and interest in the subject, and you should ideally have a grade 7 or above at GCSE.

An interest and willingness to learn about current affairs is key, as is understanding the need to learn vocabulary and grammar rules independently and thoroughly.

WHERE COULD IT LEAD?

In a global workplace, those speaking more than one language will enjoy more opportunities than ever before.

Practically any job can involve languages, whether in the UK or abroad. Languages work well with a wide number of university courses and subsequent careers.

Previous students have gone on to study Modern Languages at Cambridge, Business and German at Nottingham, French at Bristol University, and German at Sheffield. Languages can be studied alongside Law, Linguistics, Business Management, History and Engineering to name just a few options. Studying a language at A' Level may also enable you to spend part of your degree in France / Germany or a French or German speaking country.

HOW WILL I BE ASSESSED?

All assessment is linear, with examinations at the end of College II.

FRENCH & GERMAN

Paper 1 - Listening, Reading and Writing (translations and summary). 50% of A' Level

Paper 2 - Essay Paper, 2 essays based on the set book and film. 20% of A' Level

Paper 3 - Speaking exam (an oral exam with a discussion based on a stimulus card and a presentation and discussion on an individual research project). 30% of A' Level

Lisa Gibbs, Head of Modern Foreign Languages

MUSIC (BOARD: EDUQUAS)

WHY STUDY THIS COURSE?

Music at A level aims to enable students to develop a deeper understanding of music. It is not only a fantastic course for those who may wish to pursue music at university or college, but also for those who enjoy music and wish to extend their understanding of it. It is intended to provide an extension to the skills of performing, composing and listening which form the basis of GCSE Music.

In the words of Albert Einstein: “The greatest scientists are artists as well”.

WHAT WILL I STUDY?

The Eduqas course provides the opportunity to major (35% of the submission) in either performing or composing, depending on the strength of the candidate. This tailored approach works extremely well. A Level Music students will take an active role in performances and co-curricular music groups within the school. Students study the development of the Symphony as a genre from 1750-1900, and then they choose two further topics out of five listed below, including Musical Theatre, Rock and Pop, or Jazz.

WHAT DO I HAVE TO DO TO JOIN?

A love of learning about, listening to and performing music and at least grade 6 in one instrument/voice. GCSE Music is recommended as a precursor to A-Level Music, but it is not a requirement for success at this level. Grade 5 Theory is also a good foundation for this course but not compulsory. Please speak to your subject teacher to discuss whether Music A Level would be a good choice for you.

WHERE COULD IT LEAD?

Due to its wide skill set, Music is recognised as an academic subject for university entries.

It complements a range of commonly required A-Level subjects like Maths, Physics, English and Biology.

Music graduates have a wide range of career options available to them both inside and outside the industry, including: performer, teacher, administrator, songwriter, conductor, composer, recording engineer, manager, promoter, or music publisher.

There are also many jobs in music business related areas, such as: careers in digital marketing, social media, PR, technology, label services, ticketing and merchandising. It is also common to find music graduates in consultancy,

finance, banking, music therapy and legal jobs.

HOW WILL I BE ASSESSED?

Performing		Recital (6 - 12 minutes, depending on weighting) A recital performed live in front of a visiting examiner achieved through playing or singing solo or in an ensemble, improvising or realising music through music technology. Instrumentalists/singers should present music of roughly Grade 6 standard.
35%	3(+) pieces 10-12 mins	
25%	2(+) pieces 6-8 mins	
Composing		Composition of two or three separate pieces of music, one in response to a brief set by the exam board, reflecting the Western Classical Tradition. The second composition is a free composition, to a brief written by the student. Combined duration of 4 – 10 minutes, depending on weighting.
35%	3 pieces 8-10 mins	
25%	2 pieces 4-6 mins	
Appraising		Listening and Appraising exam Candidates will develop knowledge and understanding of music through three areas of study (AOS). Area of Study A: The Western Classical Tradition (The Development of the Symphony) - This is a compulsory unit. Candidates can then choose two further contrasting Areas of Study, one from: AOS B: Rock and Pop AOS C: Musical Theatre AOS D: Jazz And one from: AOS E: Into the Twentieth Century AOS F: Into the Twenty-first Century
40%	Approx. 2h 15 min exam	

Andrew Passmore, Director of Music

PHYSICAL EDUCATION

(BOARD: AQA)

WHY STUDY THIS COURSE?

Academic PE is recognised as a Science both at GCSE and A Level. It is a varied, challenging course requiring academic ability, sporting success and a keen interest in the world of sport and exercise. The course compliments Biology, Psychology and History.

The A Level PE course offers a broad range of topics including biomechanics, anatomy, exercise physiology, sport sociology, sport psychology and the history of sport. The course develops a wide range of study skills, requiring the ability to describe anatomical structures to analysing sport psychology theorems. The variety of the course is exciting and demands any student to be committed, resilient and dynamic in their studies.

The course provides pathways into a number of possible careers from Medicine; Dentistry; Physiotherapy; Sports Marketing; PR and Journalism; Sport Psychology; Teaching; Coaching and Childcare.

WHAT ELSE IS EXPECTED AT A LEVEL?

In order to gain the best results, it is expected that you will continue to participate in one competitive sport outside of school as well as taking an active role as a sports ambassador in school. This may involve leading training sessions, umpiring matches and supporting lessons when possible. This will also provide experience and will give depth to any UCAS Personal Statement or job application. Students will be assessed on their practical performance in one sporting activity and in order to gain the highest marks possible, they must be effective, proficient and regularly competing in this sport.

HOW IS IT ASSESSED?

- Two written papers: Each are 2 hours, worth 70% of A Level.
- Practical performance in one sporting activity is assessed and is worth 30% of A Level.

HOW DO I NEED TO JOIN?

To join the course it is desirable to have at least a grade 6 (or equivalent) in GCSE science or PE and it is vital that you are regularly competing one sporting activity. You must have a keen interest in sport and be prepared to study a diverse course covering in-depth physiological concepts, psychological theories and socio-cultural issues in sport and exercise.

WHERE COULD IT LEAD?

PE is a recognised science and supports other subjects on the road to Medicine, Dentistry, Physiotherapy and Exercise Science degrees, to name but a few. It also adds breadth to a UCAS application form as A Level PE students must show commitment and dedication to competitive sport as well as their academic studies. Sport in itself will strengthen any university or job application form and the A Level PE course adds academic rigour to this talent.

Recent students have completed courses in Physical Education, Paediatric Nursing, Occupational Therapy and Physiotherapy.

Jackie Greenwood, Director of Sport and Co-Curricular

PHYSICS (BOARD: AQA)

WHY STUDY THIS COURSE?

Do you like solving problems? Do you like a challenge? Can you think logically? Do you enjoy those 'eureka' moments when you suddenly see things in a different way? Do you like Science?

Are you considering one of the thousands of stimulating careers which involve Science? Can you work methodically in a practical situation, keeping an eye out for the unusual or unexpected?

If your answer to at least some of these questions is 'Yes', then we can help; study Physics at A Level!

WHAT WILL I STUDY AND HOW WILL IT BE ASSESSED?

The new A Level is a 2 year course following the AQA specification with all examinations at the end of the second year of study. The topics are in outline:

1st Year

- Measurement and their errors
- Particles and Radiation
- Waves
- Mechanics and Materials
- Electricity

2nd Year

- Further Mechanics and Thermal Physics
- Fields and their consequences
- Nuclear Physics
- An optional module from Medical Physics, Astrophysics, Turning Points in Physics, Engineering Physics or Electronics. This will be decided at the beginning of the second year of study.

HOW WILL I BE ASSESSED?

Assessment consists of 3 x 2 hours exams which will be sat at the end of College II.

Practical examinations have been removed from the reformed A Level and replaced by the 'Practical Endorsement'. Students will have to conduct twelve (12) required practicals with an aim of demonstrating predetermined skills. This will be internally assessed and carries a 'Pass' or 'Fail' grade. In Examination Paper 3, half of the questions are based around these skills and practicals.

WHAT DO I HAVE TO DO TO JOIN?

- A willingness to learn and to master new ideas and techniques.
- Ideally, a grade 6 at GCSE Science (Double Award or separate).
- Ideally, a grade 6 at GCSE Maths.

Maths at AS Level is not a requirement for studying Physics at A Level. We teach the necessary Maths that you have not come across at GCSE when we need it. However, Maths is part of Physics and helps in exploring some of the ideas and their consequences.

WHERE COULD IT LEAD?

As well as degrees in the various branches of Physics and Engineering (for which Maths at A Level is essential), Physics A Level is a good basis for many other scientific disciplines, including Medical Sciences and Computer Sciences.

Previous students studying Physics have gone on to take degrees in a wide range of subjects from Art to Architecture. Physics graduates are highly sought after and work in a wide range of careers from Banking to Teaching.

Paul Davies, Head of Physics

PSYCHOLOGY (BOARD: OCA)

WHY STUDY THIS COURSE?

Psychology is a self-critical subject, and all theories and research studies are evaluated thoroughly. Through the study of Psychology you will not only gain an understanding of why we do what we do, but you will also gain a deep understanding of how science works. Psychology is the scientific study of behaviour and mental processes. The A Level course aims to develop your knowledge and understanding of psychological theories, concepts, methodologies, research and applications. You will develop your understanding of the different areas of Psychology, and develop your skills of analysis, interpretation, research and evaluation.

The subject matter of psychology is wide-ranging, and includes the study of psychological disorders, obedience, conformity, development, memory, learning, attachment, the brain, and genetic influences on behaviour. Theories are developed to explain behaviour, and studies are conducted to test theories. Scientific methods, such as experiments and observations, are used to investigate the causes of human behaviour. Statistical techniques are used to analyse the data gathered in psychological research.

WHAT WILL I STUDY?

Psychology is a two year linear course with three final year exams.

Year 1

Unit 1 CORE STUDIES: The course covers social, cognitive, physiological, developmental and individual approaches to psychology. Within each approach students are taught two studies under a shared theme. Year one themes are: obedience to authority, memory, regions of the brain, understanding disorders and external influences on children's behaviour. The studies are examined and evaluated for their implications for society and how they could be improved.

Unit 2: RESEARCH METHODS: Four psychological investigations will be studied; these are a self-report, an observation, an experiment and a correlation. Students will design, conduct research as well as evaluate methodological issues.

Year 2

Unit 1 CORE Studies: Students expand their knowledge and learn ten more studies within each of the five approaches under different themes these are: responses to people in need, attention, moral development, brain plasticity and

measuring differences.

Unit 3 APPLIED PSYCHOLOGY: Students will cover a compulsory area of Issues in Mental Health and two other areas which will be Criminal Psychology and Child Psychology.

WHAT DO I HAVE TO DO TO JOIN?

A minimum of grade C (or equivalent) in both English and Mathematics is desirable. An interest in science is of benefit.

WHERE COULD IT LEAD?

Psychology develops skills of data analysis and provides a critical understanding of the nature of research and evidence. It will help you to develop a better understanding of why people behave as they do, and will give you insight into some important philosophical, social, cultural and ethical issues. Psychology provides skills and insights that could be useful in a range of careers, including social work, nursing, advertising, teaching, sales work, police work, management and personnel, and any job that involves a lot of contact with others. Taking A Level Psychology is also the first step towards developing a career as a psychologist, either as a researcher, or as a clinical psychologist, health psychologist, forensic psychologist or one of the many other fields of applied psychology.

HOW WILL I BE ASSESSED?

A Level two year Linear Course

Topics	Assessment Method Overview	
Unit 1 Research Methods	1 hour written exam	90 marks 30% of A Level
Unit 2 Psychological themes through core studies	2 hour written exam	105 marks 35% of A Level
Unit 3 Applied Psychology	2 hour written exam	105 marks 35% of A Level

Kirsteen Langford, Head of Psychology

RELIGIOUS EDUCATION

(BOARD: OCR)

WHY STUDY THIS COURSE?

Religious Studies might be described as 'ever old, ever new'. The first universities studied philosophy and the need for clarity of thought and argument, the tools of philosophy, have never been more relevant than they are today.

Philosophical skills are interesting in their own right but also underpin all academic subjects and will be invaluable in your other areas of interest too. Moreover, in today's rapidly changing world there has never been a greater need for ethicists.

Every institution, such as a hospital, a school and a university has to have an ethical committee. Furthermore, in a multicultural society there is a great need to be knowledgeable about religious issues so we can make informed judgements about the key issues of our time, which will shape all our futures.

WHAT WILL I STUDY?

Content Overview

PHILOSOPHY OF RELIGION

- Ancient philosophical influences.
- Arguments for the existence or non-existence of God.
- The nature and impact of religious experience.
- The challenge of religious belief of the problem of evil.
- The nature of soul, mind and body.
- The possibility of life after death.
- Ideas about the nature of God.
- Issues in religious language.

RELIGION AND ETHICS

- Normative ethical theories.
- The application of ethical theory to two contemporary issues and importance.
- Ethical language and thought.
- Debates surrounding the significant ideas of conscience and free will.
- The influence on ethical thought of developments in religious beliefs and the philosophy of religion.
- Developments in religious thought.
- Religious beliefs values and teachings.
- Sources of religious wisdom and authority.
- Practices, which shape religious identity, significant social and historical developments in theology and religious thought.
- Key themes related to the relationship between religion and authority.

DEVELOPMENTS IN RELIGIOUS THOUGHT

- Religious beliefs values and teachings.
- Sources of religious wisdom and authority.
- Practices, which shape religious identity, significant social and historical developments in theology and religious thought.
- Key themes related to the relationship between religion and authority.

WHAT DO I HAVE TO DO TO JOIN?

To study A Level Religious Studies you need to be open to new ideas, enjoy discussions, keep up with current affairs and have an enquiring mind. It may be an advantage to have studied Religious Studies at GCSE but it is not essential.

WHERE COULD IT LEAD?

This new OCR Religious Studies should equip you for studying Philosophy, Ethics, Religious Studies and Theology at university. It will also help to underpin courses in Law, Politics, International Relations, Anthropology, English and History.

Recently we have had former Mount School students reading PPE (Philosophy, Politics and Economics) at Oxford, Philosophy at Cambridge, Nottingham and Birmingham, Religious Studies at Leeds, Theology and Religious Studies at Exeter as well as reading Peace Studies at Sussex. Other students are studying Law and Politics as well as Anthropology, Architecture, Psychology and Medicine. One student is now working for the Oxford Research Institute researching war and peace and green issues. Religious Studies can lead to careers in education, law, politics, diplomacy and public relations as well as providing a sound basis for further academic study.

HOW WILL I BE ASSESSED?

A Level two year Linear Course

Philosophy of Religion	2 hour exam	120 marks 33.3% of A Level.
Religion and Ethics	2 hour exam	120 marks 33.3% of A Level.
Developments in Religious Thought	2 hour exam	120 marks 33.3% of A Level.

EXTENDED PROJECT QUALIFICATION (EPQ)

WHY STUDY THIS COURSE?

At The Mount School students are able to study for an Extended Project Qualification (EPQ) through which they are able to extend their abilities beyond A Level and prepare for university or a future career.

If you have a passion, are motivated and able to work independently and are keen to follow a personal interest, which you want to explore in more depth, you may want to consider an EPQ.

An EPQ can help your university application and give you a deeper understanding of your chosen career path, showing that you have a breadth of interest and knowledge.

It is highly regarded by universities and is often taken into account when applying through UCAS, and is included in their offers. "Nearly 1 in 5 successful applicants to Durham has completed the EPQ," The Sunday Times 16th February 2014.

WHAT WILL I STUDY?

You will be given guided learning hours through learning Study Skills at University of York and be allocated a Supervisor from The Mount School staff who will support you through the process.

It can be submitted in two forms. Either as an in-depth 5,000-word research-based study or an artefact and a 1,000-word essay. The artefact can be a physical outcome such as a book, film, piece of artwork or recorded musical event for example. You will also complete a Production Log, which reflects all your decision making with evidence of research, planning, referencing and evaluation. Finally, you will deliver a Presentation to an audience in November of College 2. This usually takes the form of a PowerPoint and questions from an audience or can be a display or performance showcasing your artefact. Your written study, artefact (if you choose to do one), Production Log and Presentation make up your EPQ submission.

The EPQ carries the same UCAS points as an AS exam and is awarded from A* to E.

TIMETABLE OF STUDY

Interested students will begin researching their EPQ topics from October in College 1 and the completed studies are handed in in September of College 2, with Presentations in November and the final deadline in December.

COLLEGE GAMES

WHAT TO EXPECT

College Games provides opportunities for girls to improve their fitness levels, train and compete in a variety of sports and the option of completing the STA Pool Lifeguard Qualification.

Sports teams and fixtures continue right through College where the 1st teams will compete in Hockey, Netball, Tennis, Rounders and Swimming in local and regional competitions. Training nights are also available to College girls to hone their skills and prepare for competition. Being part of a sports team can be invaluable when applying to Universities and prospective employers as it demonstrates character, organisation, time management, competitiveness and athleticism. Showing commitment to teams throughout College can be seen by universities and employers as a real strength when others may drop out earlier to focus on studies. It is possible and beneficial to do both and the PE department will support anyone who endeavours to commit to both their academic studies and sport.

The less competitive and more recreational options in College Games include use of the fitness suite, fitness circuits, Badminton, Volleyball, Football, Rounders, Basketball and 'Couch to 5k'. The fitness options encourage girls to adopt an active, healthy lifestyle in preparation for the future. It can also provide a cathartic experience for girls deep in their studies during the rest of the day. It is vitally important for health and well-being to be involved in physical activity and we provide girls with these opportunities in College Games in the hope that they will continue to do this independently in the future.

There is also the opportunity to qualify as a professional lifeguard as the qualification is delivered during College Games lessons for those who want to gain paid work as lifeguards or add depth to their personal statement or CV when applying to higher education institutes or prospective employers. This course is completed in College 1, it takes two terms and there is an additional cost but it a great way to broaden their CV and gain an extra qualification.

FACILITIES

The Mount School provides excellent on-site facilities for students in lessons and free time. Facilities include a sports hall, gymnasium, fitness suite, indoor 25m swimming pool, two newly surfaced netball and tennis courts, three grass tennis courts, four grass rounders pitches, 7 and 11 a side football pitches and a 300m track on our beautiful grounds. Hockey training and matches take place at Energise.

OPTIONS

Typically, options are provided to students so girls can opt for an activity to suit their interests and needs. Options each term vary and the PE department are always keen to offer other activities at students' request.

A typical year in College Games would include the following options:

	Autumn Term	Spring Term	Summer Term
1	NPLQ / Netball	NPLQ / netball	Recreational Swim
2	'Couch to 5k' / Circuits	'Couch to 5k' / Circuits	Rounders
3	Netball	Netball	Tennis
4	Badminton	Basketball	Fitness Suite
5	Fitness Suite	Fitness Suite	Athletics



“Pupils in lessons were exuberantly confident.”*



“Pupils exhibit a sense of empowerment”*

“Pupils show strong knowledge and understanding across subjects. High expectations in teaching mean that pupils strive for and achieve high standards in their learning. Results at A Level are above national average. Leavers are successful at entry to a wide range of universities.”*

*The Mount School York judged **excellent** in ISI Inspection

CONTACT

If you have any further questions regarding Sixth Form and A Levels please speak to Mrs Joanne Goudriann.

For external enquiries please contact the Admissions Team

Tel: 01904 23 23 23

email: admissions@mountschoolyork.co.uk



Fidelis in Parvo

Faithfulness in small things